







SPECIFICATIONS - FINGERSTYLE GUITAR. VENETIAN (SOFT) CUTAWAY SHAPE BODY GUITAR

Model: WJGS-SS-FB, Serial No. 08 FB 2020, HANDCRAFTED BY WAYNE JOHNSON, MARCH 2020

18 Frets, standard medium gauge. Spacing for 645.16mm open string length. Width at nut 46mm. Width at 12th fret 56mm

Lower Bout width 414mm. Upper Bout width 278mm. Waist width 245mm. Body length 507mm. Tail Height 117mm. Height at neck joint 89mm.

Sound hole diameter 99mm.

Rosette: 'Blackwood, Ebony Centre Ring, Spalted Queensland Walnut segments and B/W/B purfling at the sound hole.

'Sikta Spruce' AAA grade top.

Quilted Tasmanian Blackwood Back and Sides. Tail Wedge 'Spalted Queensland Walnut'.

Calculated Top target thickness 2.6mm. Top radius 9.144m (30ft). Calculated Back target thickness 2.2mm. Back radius 4.88m (16ft)

Sides 2mm thickness.

One timber piece bolt on neck 'Queensland Maple' with 'Volute'.

Fretboard inlay Pearl (half and full 'W' shapes) and white side dots. Finger Board Radius 406mm (16inches). Frets Standard Medium size ('StewMac').

Two-way neck truss rod with 'Macassar Ebony' truss rod cover plate. 0.5mm Neck Relief applied at the 6th fret.

Back head plate: Tasmanian Blackwood and Macassar Ebony. Front head plate: Spalted Queensland Walnut & 'Macassar Ebony' with 'W' shape at the top and 'J' pearl inlay Tasmanian Blackwood neck heel cap. Ebony outer purfling on the headstock.

Finger board 'Macassar Ebony' with 'W' shape overhang at the sound hole.

'Gotoh Black' 510 tuners, Ratio 18:1.

Ox Bone 6.4mm wide compensated Nut with flaring for strings front / rear of nut. Ox Bone 5.8mm wide compensated Saddle

Ox Bone string pegs with acrylic tortoise shell inlay

'W' Shaped Bridge Indian Rosewood' laminated with Carbon Fibre patch. Bridge Weight 18.7 grams. Bridge Weight with Ox Bone Saddle 27.9 grams.

Carbon Fibre Laminated Top Bracing and Back Bracing: 'Adirondack Spruce'. Body neck block 'Queensland Maple' and tail block Marine Plywood, Top and back linings laminated in Tasmanian Oak. Bridge plate 'Indian Rosewood' that includes laminated sandwich Carbon Fibre patch'.

Top 'Falcate' Bracing format. Back: Tuned Live Bracing format.

2 x side mass mounting blocks fitted *without* mass weights. $T(1,1)_1 = 89\text{Hz}$, $T(1,1)_2 = 156\text{Hz}$, $T(1,1)_3 = 210\text{Hz}$ achieved *without* using weights.

Action String height at 12th fret is 2.7mm, for 'E', 6th String and 1.7mm at the 'E', 1st string.

String Height at the front of bridge from the Top is 16.5mm.

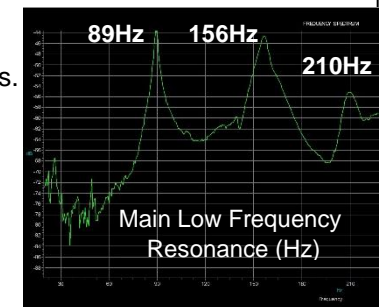
'Elixir' Acoustic Guitar Strings, Phosphor Bronze, NANOWEB, Light 12/53.

Spalted Queensland Walnut Timber bindings. Top includes outer Ebony purfling and B/W/B purfling.

L R Baggs 'Lyric' Acoustic Microphone is to be installed including a chrome strap button at the neck joint.

Spalted Queensland Walnut timber veneer on 'Oregon' 'Streamlined' arm rest bevel from the lower bout to the waist adjoining the bindings.

Sprayed with Vinyl sealer coat and 7 gloss coats of 'Behlem' Nitro Lacquer. The Guitar is wet cut (grades 600 to 2000) and then is buffed and polished.



WJ Guitars